

# AlgoRenko Chart Software User Guide

Our chart software works on MetaTrader4. You need to install MetaTrader4 first if you haven't.

You can download and install MetaTrader4 from any broker you'd like. If you can't find it, go to: <http://www.metatrader4.com/> to download and install MetaTrader4.

Then, follow the steps below to install our chart software:

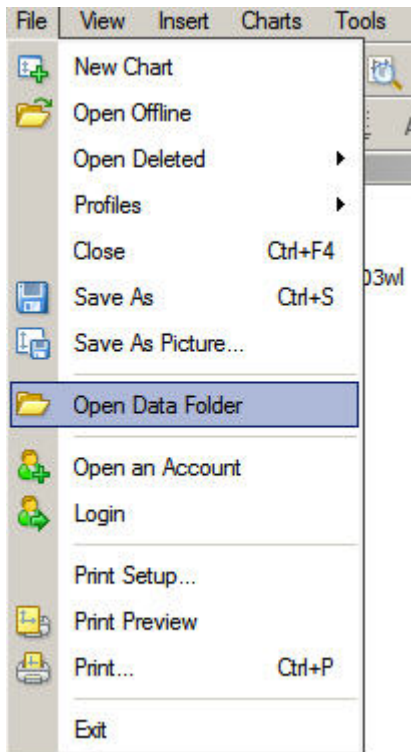
## Step 1: Install The Plug-In:

First, you should have already downloaded the ZIP file containing all the installation files from your members area. Inside that ZIP file, there are 2 files: AlgoRenko.ex4 and MedianRenkoBars.dll

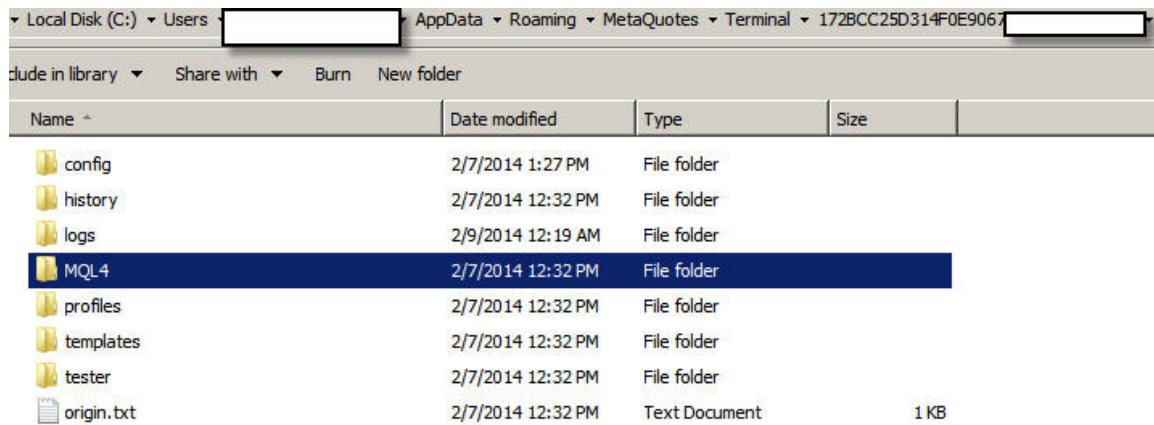
Next:

*For build 574 and later:*

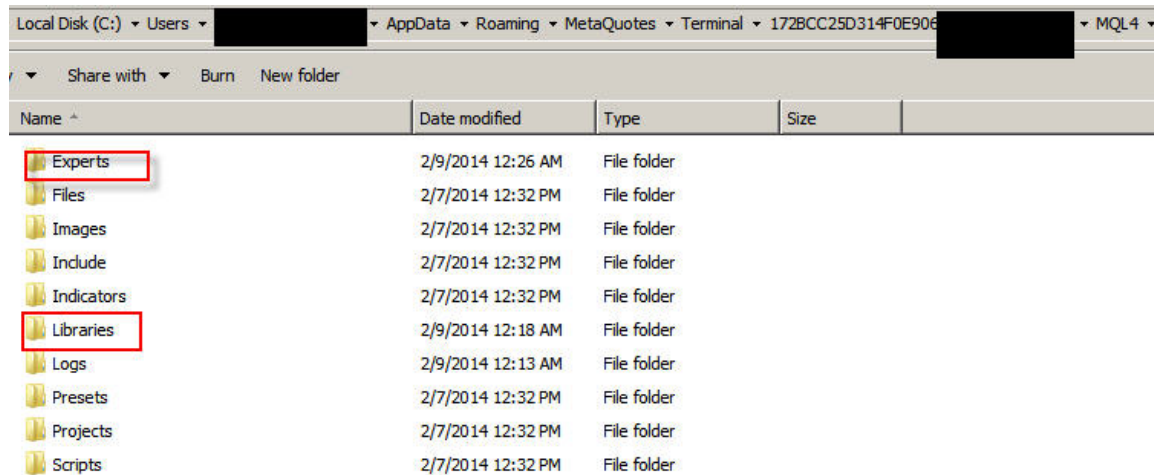
Click File --> Open Data Folder



Once you have that data folder open, locate the MQL4 folder inside it. Then open that MQL4 folder:



Inside that MQL4 folder, you will see these two folders: \Experts and \Libraries



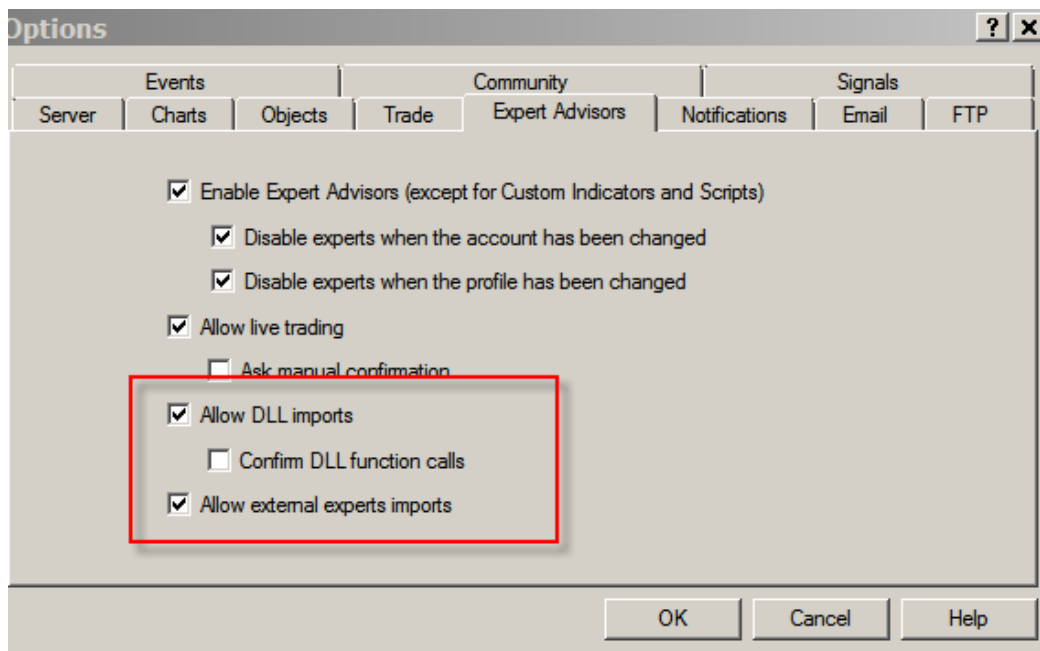
Copy the **AlgoRenko.ex4** (from the ZIP file you downloaded) to that \Experts folder (this is a subfolder within the MQL4 folder)

Then, copy the **MedianRenkoBars.dll** (from the ZIP file you downloaded) to the \Libraries folder (this is a subfolder within the MQL4 folder):

That's it. You're all set.

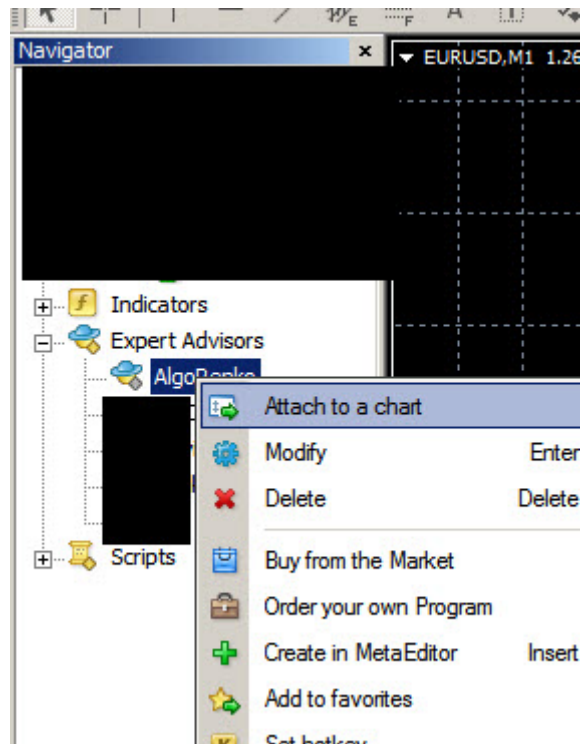
Step 2: Close and Restart Metatrader4. Click on Tools --> Options --> Expert Advisor.

Then, make sure you tick the option Allow DLL imports and Allow external experts import.

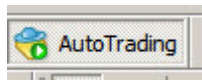


Step 3: Open the M1 (1-minute) chart of any pair you want, for example, EURUSD M1.

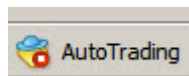
Then, from the Navigator panel, under Expert Advisors, right-click on **AlgoRenko** --> **Attach to a chart...** to attach the AlgoRenko Software to the chart.



Step 4: Make sure the Auto Trading button on the Metatrader toolbar is green, like this:

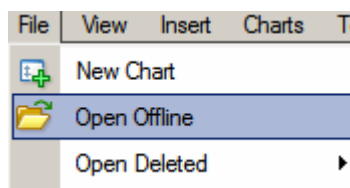


If it's red, like this:



Then click on the button, so that it turns green.

Step 5: Close and Restart Metatrader4. Click File --> Open Offline



Then choose the M3 offline chart of the instrument that you previously attached the software to. For example, if you attach the software to the M1 chart of EURUSD, then choose EURUSD and double click on it:

Open Offline Chart

History Data	Bars	From	To
EURUSD,M1	36389	2014.02.06 13:42	2014.10.07 09:58
EURUSD,M3	78	2014.09.30 09:22	2014.10.07 04:40
EURUSD,H4	6377	2009.12.21 00:00	2014.02.07 20:00
GBPUSD,H1	1030	2013.12.09 08:00	2014.02.10 05:00
GBPUSD,H4	6379	2009.12.21 00:00	2014.02.10 04:00
GOLD,H1	2048	2014.05.27 21:00	2014.09.24 18:00
GOLD,Daily	2188	2006.05.25 00:00	2014.09.24 00:00
USDCHF,H1	2048	2014.04.04 05:00	2014.08.01 12:00
USDCHF,H4	6379	2009.12.21 00:00	2014.02.10 04:00
USDCHF,Daily	2095	2007.02.19 00:00	2014.10.07 00:00
USDJPY,H4	6379	2009.12.21 00:00	2014.02.10 04:00

Open

It will open up a new chart which is the AlgoRenko chart the software generates.

Notice: During weekends, the market is close, so if you run the AlgoRenko software for the first time on weekends, it will generate the chart on the next week-day the market is open.

This chart will update in real time as it receives new data.

Thanks for purchasing this.

I wish you the best of luck.