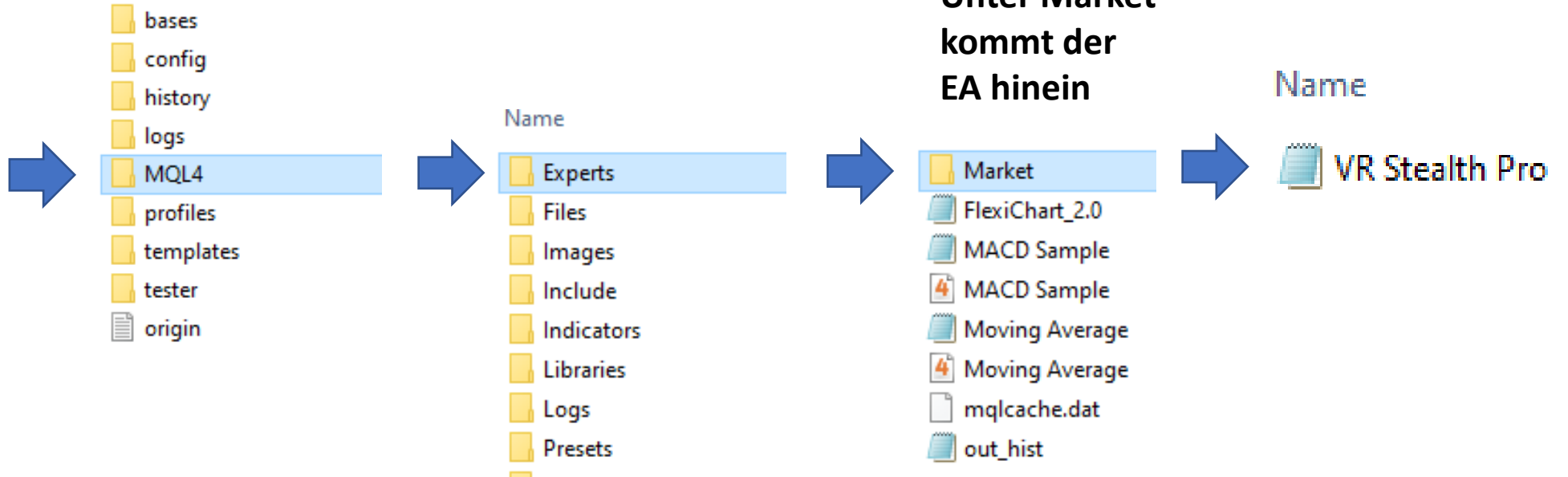
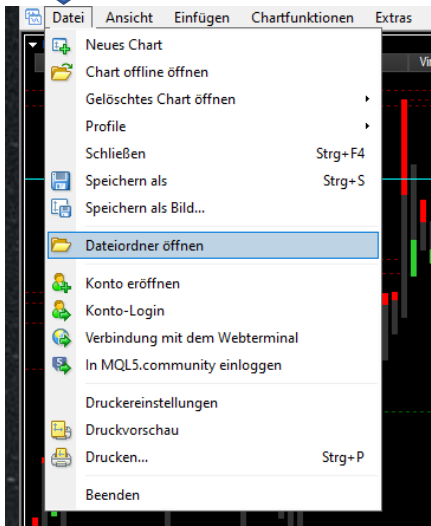


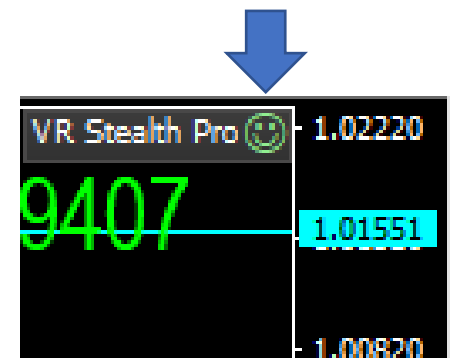
Öffne den MT4



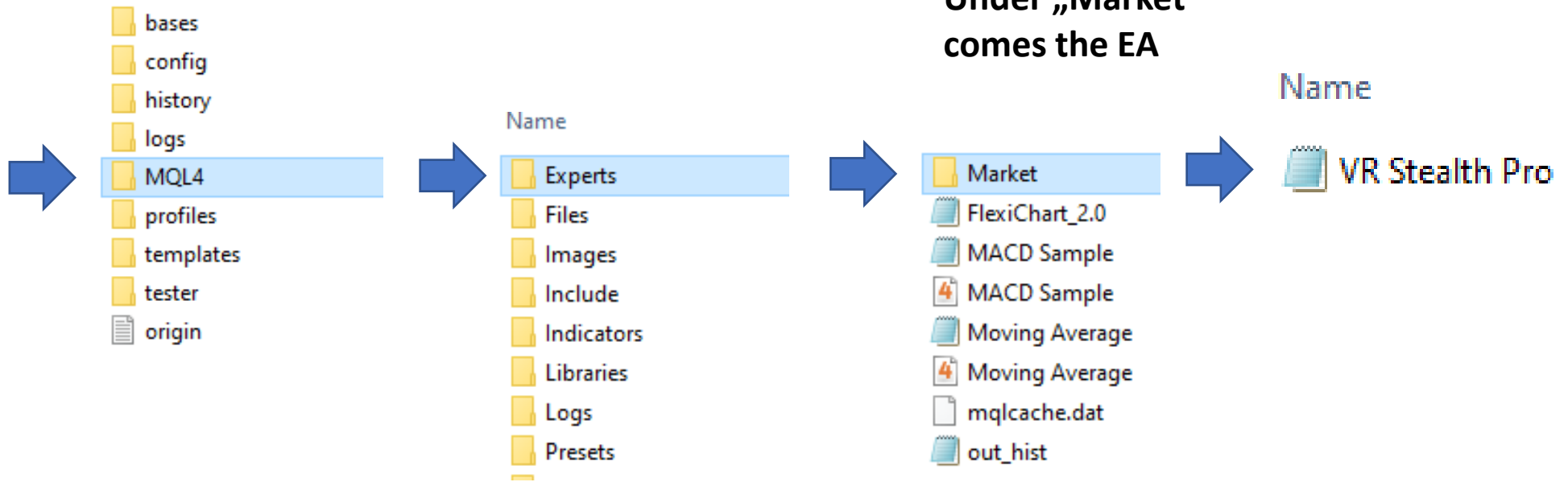
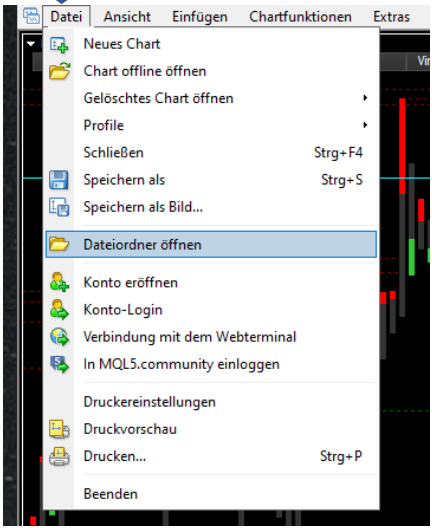
MT4 schließen und wieder öffnen!
Bei Experten = Doppelklick auf Vr Stealth pro
Import von DLL zulassen



Doppelklick auf Smiley = Einstellungen



↓ **Open the MT4**



Close and reopen MT4! For experts = Double click Vr Stealth Pro Allow import from DLL



Double click on smiley = settings

