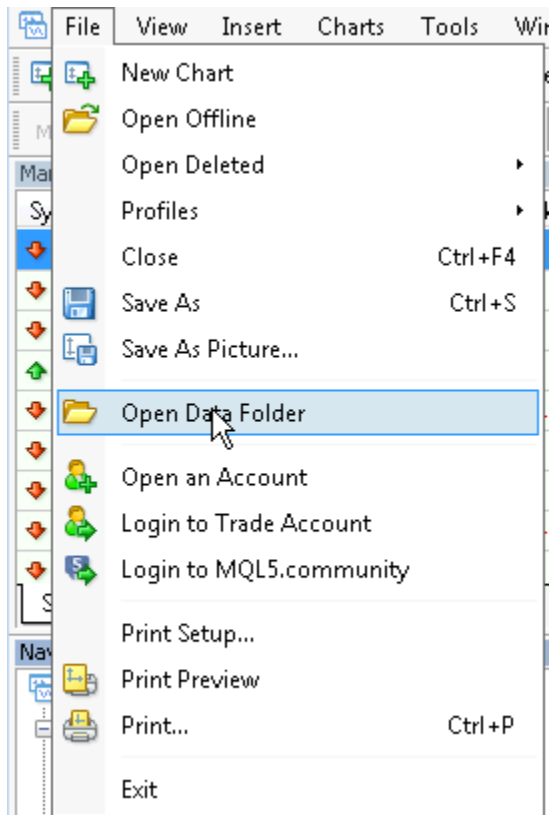
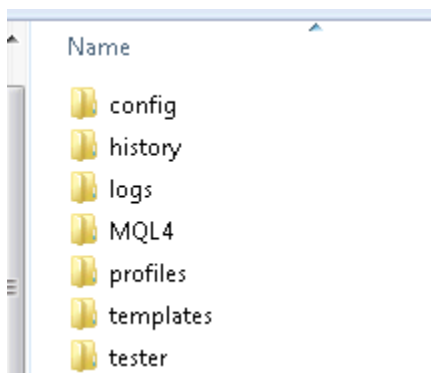


Installation

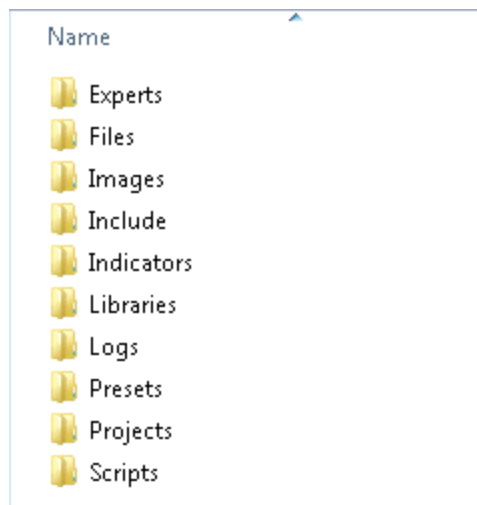
To install the EA in your mt4 you need to open the data folder of mt4 by clicking on “File -> Open Data Folder”:



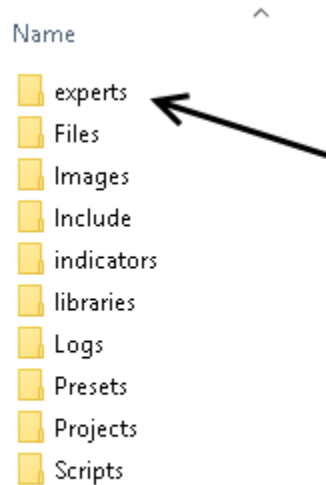
After that a windows explorer instance opens:



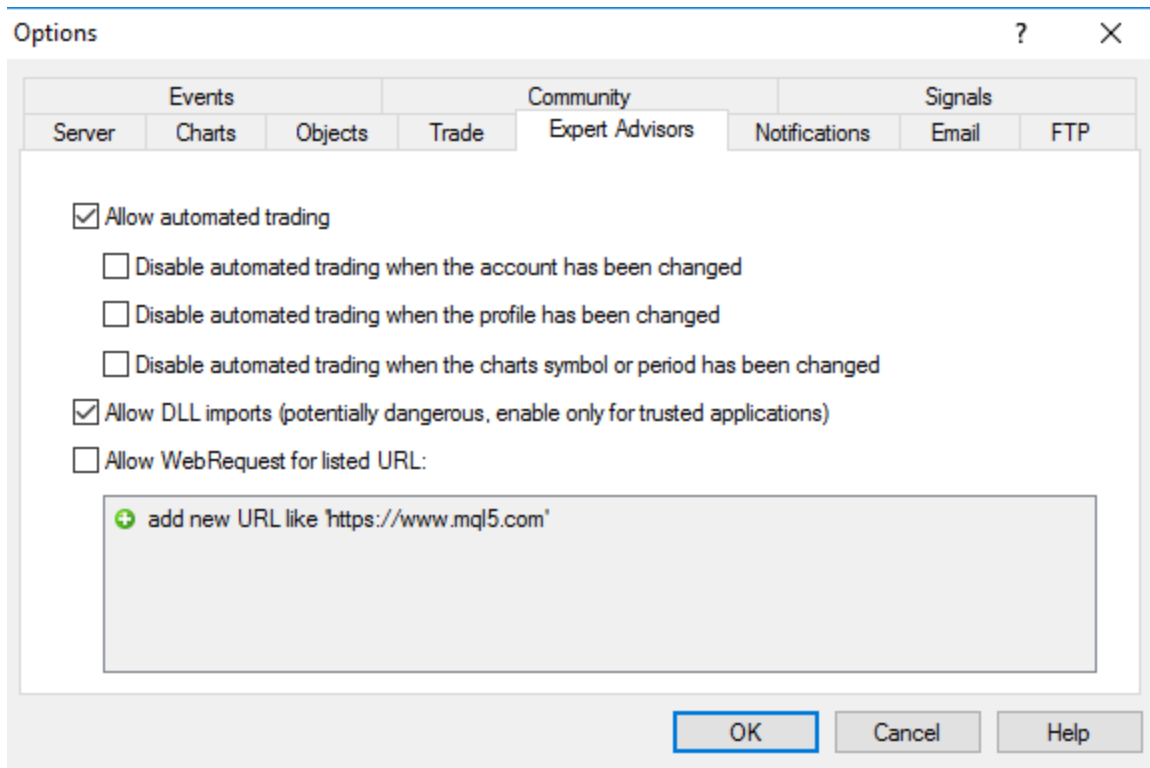
You need to navigate into the MQL4 folder. Then you will see following folder structure:



The EA file needs to be copied into the “experts”-folder:



After that you need to allow DLL imports in MT4. Please navigate into the menu “Tools -> Options” and make following configuration in the card “Expert Advisors”:



The EA can be used on different accounts but the EA is bound to one account number per day until 0 GMT. At 0 GMT the account number is reset on the server side. After the reset you can use the EA on a different account.

Example: Today you use the EA on account 111. At 0 GMT the server resets the account. Tomorrow you can use it on any other account number e.g. 222

Cheers and Happy Trading 😊

Mike