

LogicTrendline Indicator User Guide

In this manual described installation process of LogicTrendline Indicator for MetaTrader 4 trading platform build 574 or later.

Our LogicTrendline Indicator works on MetaTrader4. You need to install MetaTrader4 first if you haven't. I recommend using Forex.com Metatrader. This is what we use for our testing and the software works flawlessly with it.

Download Forex.com Metatrader here:

http://www.forex.com/metatrader_download.html

Then, follow the steps below to install our LogicTrendline indicator:

Step 1: Install The Indicator:

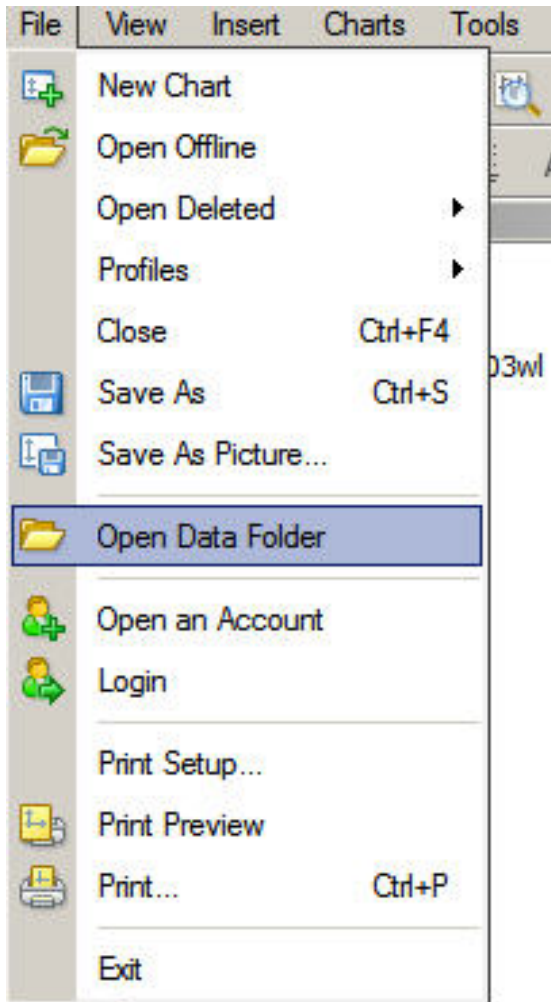
First, you should have already downloaded the ZIP file containing all the installation files from your members area and unzip it into your desktop. Inside that ZIP file, there's this file: **LogicTrendline.ex4**

Next:

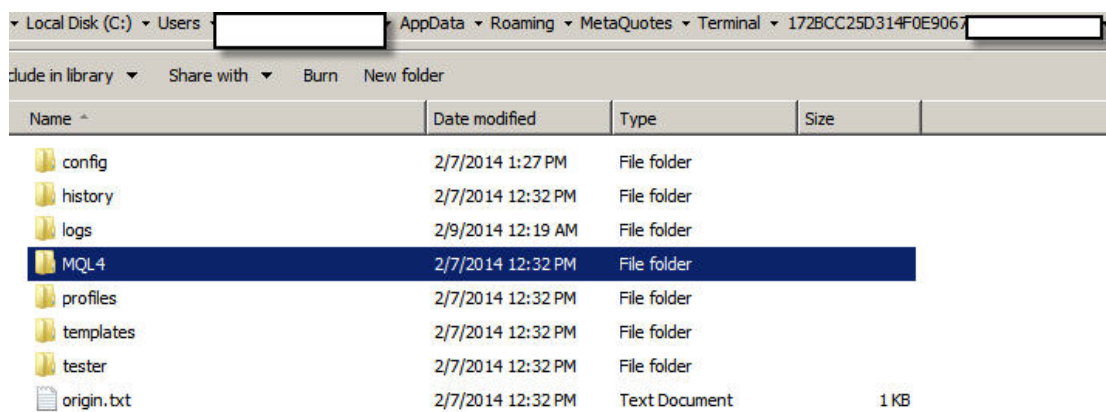
For build 574 and later:

Open your MT 4 trading platform

Click File --> Open Data Folder

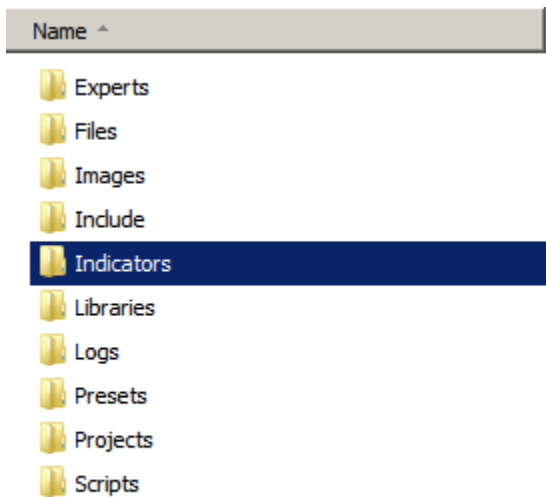


Once you have that data folder open, locate the MQL4 folder inside it. Then open that MQL4 folder:



Inside that MQL4 folder, you will see the Indicators folder , this is

where you need to copy the **LogicTrendline.ex4** from your zip file to.



NEXT STEP:

To insert the indicator to your chart, click Insert --> Indicators --> Custom, then choose LogicTrendline

This is how the indicator would look like on your chart:

