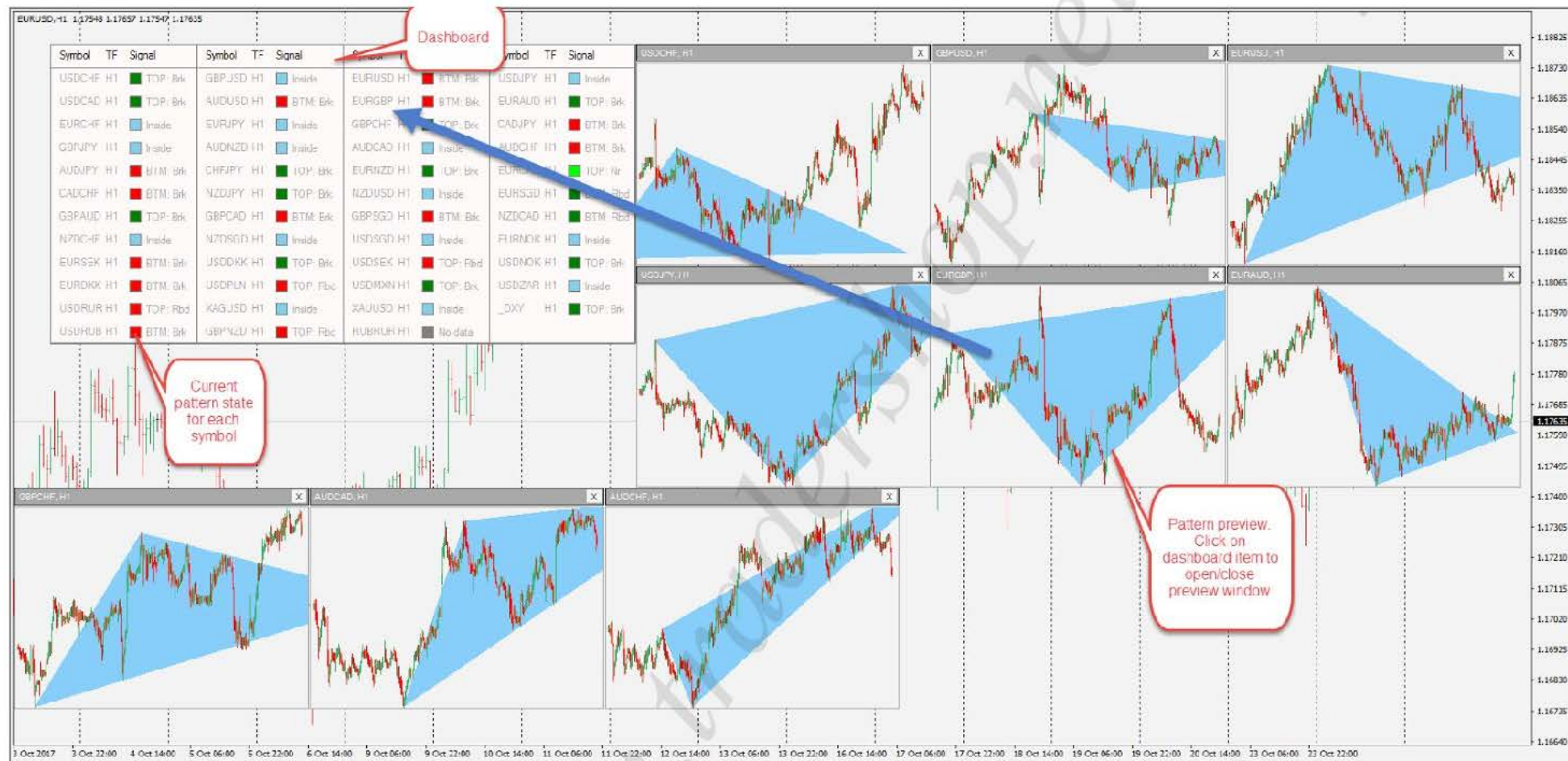


Advanced triangle builder dashboard

Help Guide to using this Dashboard

1 Common view



2 Symbol selection mode

There are 2 ways to select symbols to show

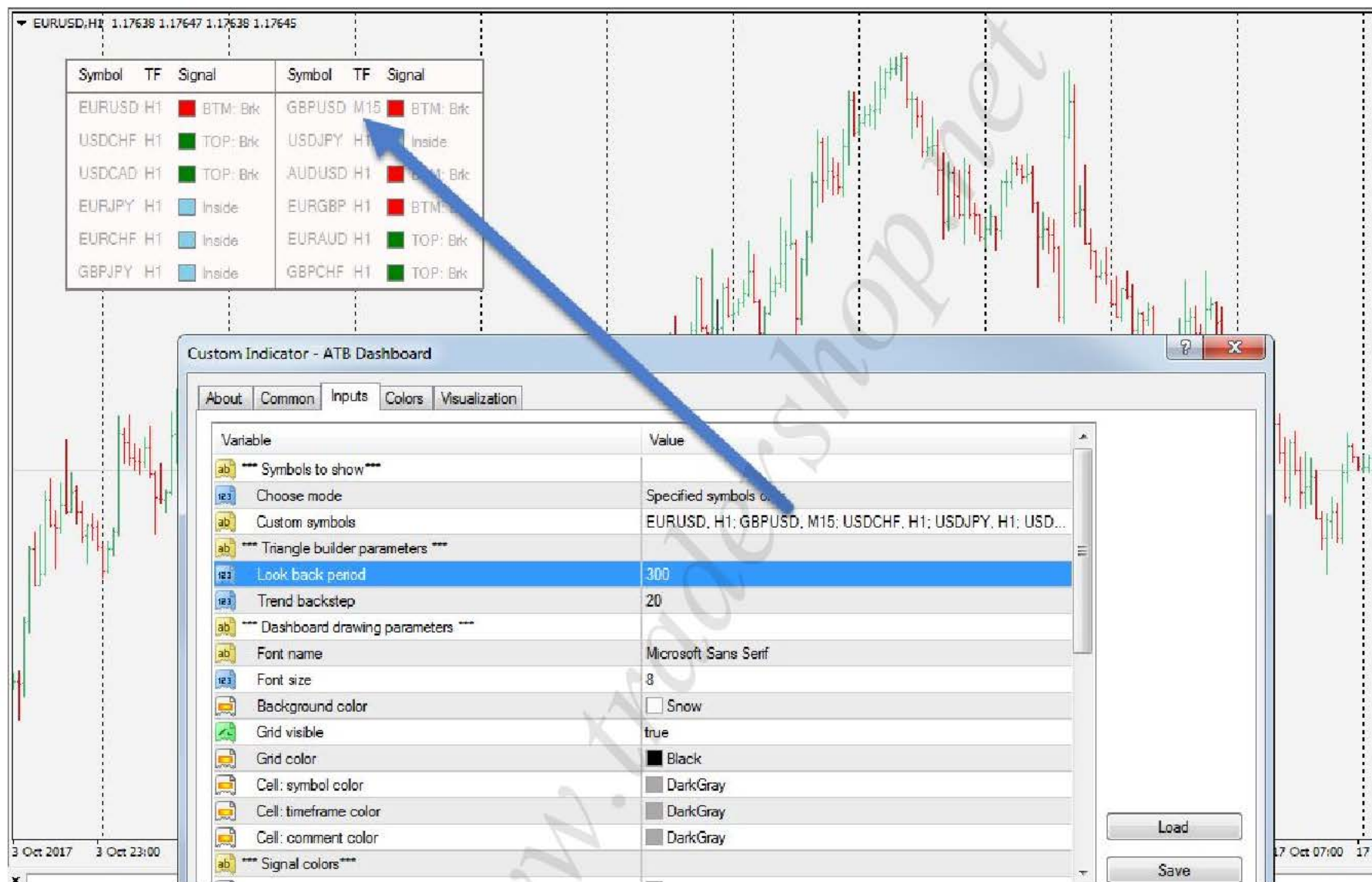
1. To use all symbols from Market Watch with current chart timeframe:

The screenshot shows the MT4 interface with a chart of EURUSD:H1. The Market Watch window is open, displaying a list of symbols and their current bid and ask prices. The Custom Indicator - ATB Dashboard window is also open, showing the 'Inputs' tab. The 'Symbols to show' dropdown is set to 'All symbols shown in Market Watch'. The 'Look back period' is set to 300, and the 'Trend backstep' is set to 20. The 'Background color' is set to 'Snow', and the 'Grid color' is set to 'Black'.

Symbol	Bid	Ask
EURUSD	1.17635	1.17642
USDJPY	113.660	113.667
USDCAD	1.26591	1.26604
AUDUSD	0.77830	0.77838
EURGBP	0.89125	0.89135
EURAUD	1.51132	1.51150
EURCHF	1.15959	1.15974
EURJPY	133.706	133.718
GBPCHF	1.30100	1.30121
CADJPY	89.777	89.795
GBPJPY	150.011	150.026
	1.12190	1.12207
	0.98525	0.98543
	0.76719	0.76739
	88.462	88.477

Variable	Value
*** Symbols to show ***	All symbols shown in Market Watch
Choose mode	EURUSD, H1; GBPUSD, H1; USDCHF, H...
*** Triangle builder parameters ***	
Look back period	300
Trend backstep	20
*** Dashboard drawing parameters ***	
Font name	Microsoft Sans Serif
Font size	8
Background color	<input type="checkbox"/> Snow
Grid visible	<input checked="" type="checkbox"/> true
Grid color	<input checked="" type="checkbox"/> Black
Cell: symbol color	<input checked="" type="checkbox"/> DarkGray

2. To use specified symbols with specified timeframes



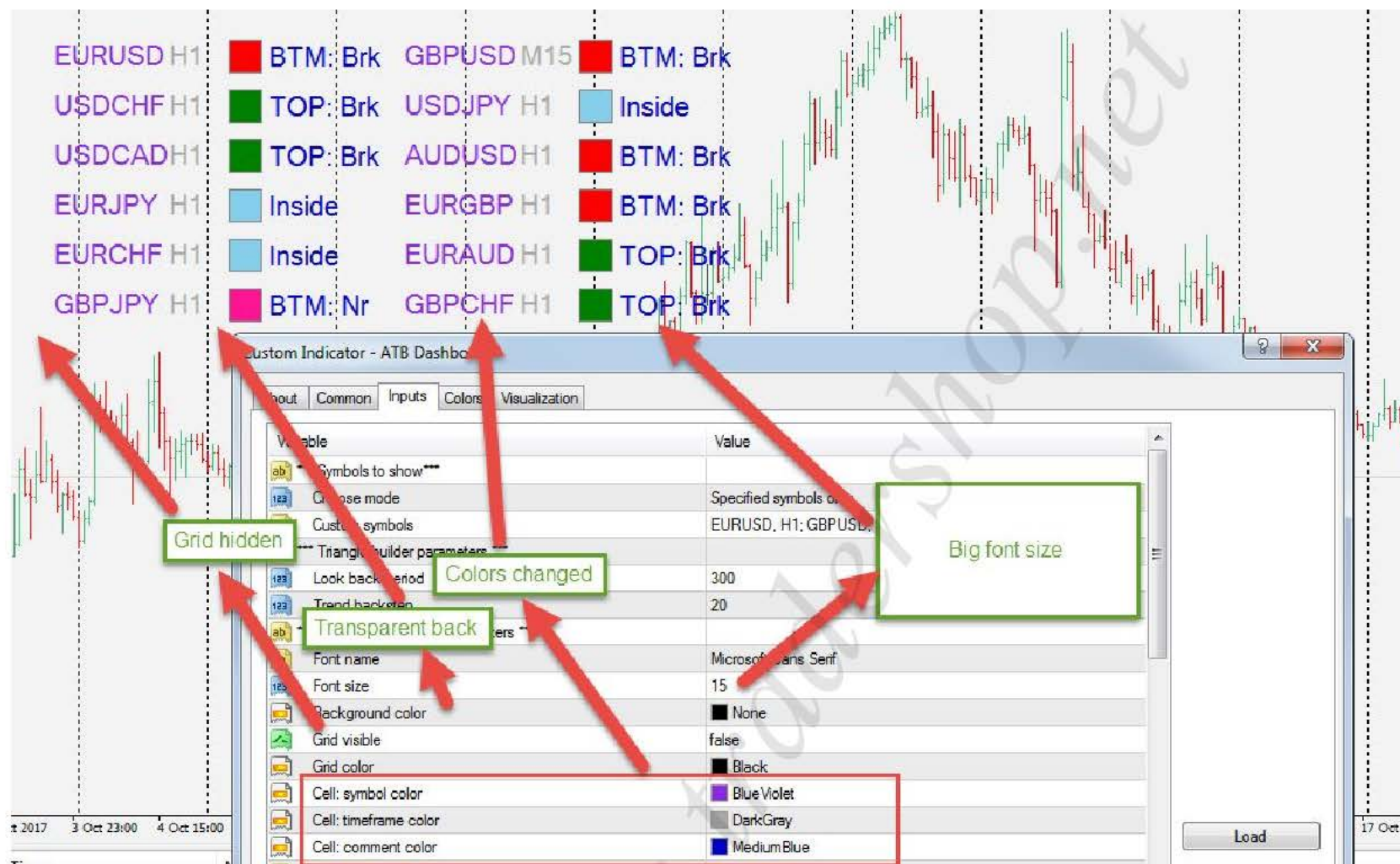
String format: each symbol definition must be separated with ";" character. Timeframe must be separated from symbol name with space or comma character

3 Customizing dashboard view

Default view:



Example of customized dashboard:



4 Possible dashboard item states

Each item of the dashboard may have next states:

1. No enough data. It appears when symbol's history is too small to build pattern
2. No pattern found. It appears when it is impossible to build triangle for current price
3. Price inside the triangle. It appears, when price is too far from triangle's edges
4. Price is near to top/bottom. appears, when price is approaching to the top/bottom edge
5. Breakout of top/bottom. It appears when the price breaks the triangle
6. Rebound from top/bottom. It appears when the price touched the edge and retraced

5 Preview panels



6 Alerts

There are 2 kinds of alerts: for breaking the pattern and for retracement:

