

Quick Start

Installation

Unzip the package and copy all the files to the directories as shown. Your metatrader installation will be in your c:\program files\mt4broker\ ... where 'mt4broker' is your metatrader broker installation folder. I'm using Alpari for the example below. Please copy all template files ('.tpl' extension) to the templates folder and indicator files ('.ex4' extension) to the indicators folder.

Important: Don't accidentally copy the tpl files into the experts\templates folder

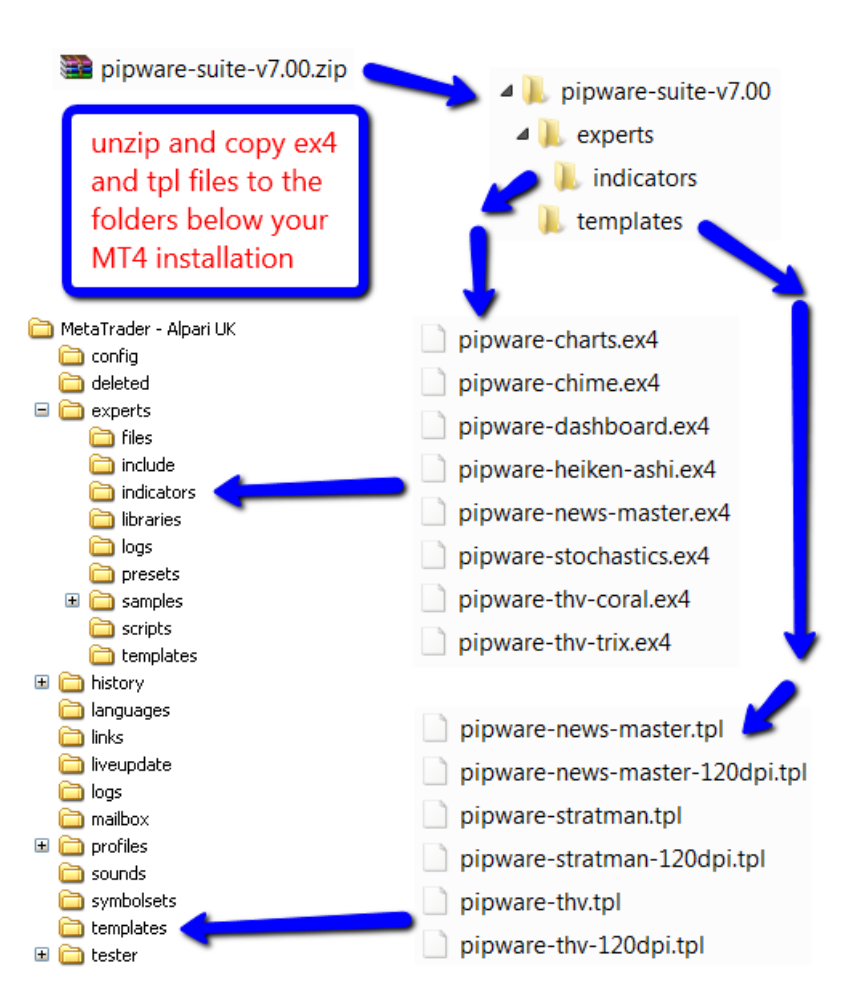


FIGURE 1 FILE LOCATIONS

After copying the files, please open metatrader, open a new chart and choose one of the pipware templates. Templates can be found on the Charts menu of metatrader or by clicking the template button on the toolbar.

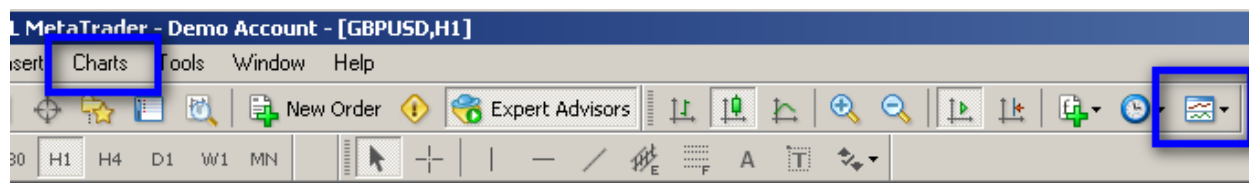


FIGURE 2 OPENING TEMPLATES

The ADR (Average Daily Range) calculations require 30 trading days worth of H1 timeframe (hour candles) data. Until you have enough H1 data, you will see the following message on the dashboard indicator.



FIGURE 3 NOT ENOUGH H1 DATA

You can force MT4 to download enough data by changing your chart to the H1 timeframe, de-selecting the auto-scroll button and continually pressing your 'page-up' key until the chart has moved back in time at least one and a half months.



FIGURE 4 AUTO-SCROLL BUTTON

Once you have enough history, you may see the 'TIME!' message on the dashboard.

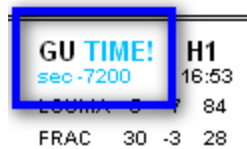


FIGURE 5 TIME! WARNING

When the market is open, this warns you that you need to adjust the time zone setting of the dashboard. The number after 'sec' tells you how many seconds you need to adjust it. Round this number to the nearest number of hours eg -7200 is shown above ... this is -2 hours. Your dashboard time zone setting needs to be 2 hours less than its current setting.

Note: The market must be open ie your MT4 broker is receiving data when you do this

To adjust indicator settings, open the indicators list dialog. Do this by pressing the key combination 'ctrl+i'. Highlight the dashboard indicator and click the edit button.

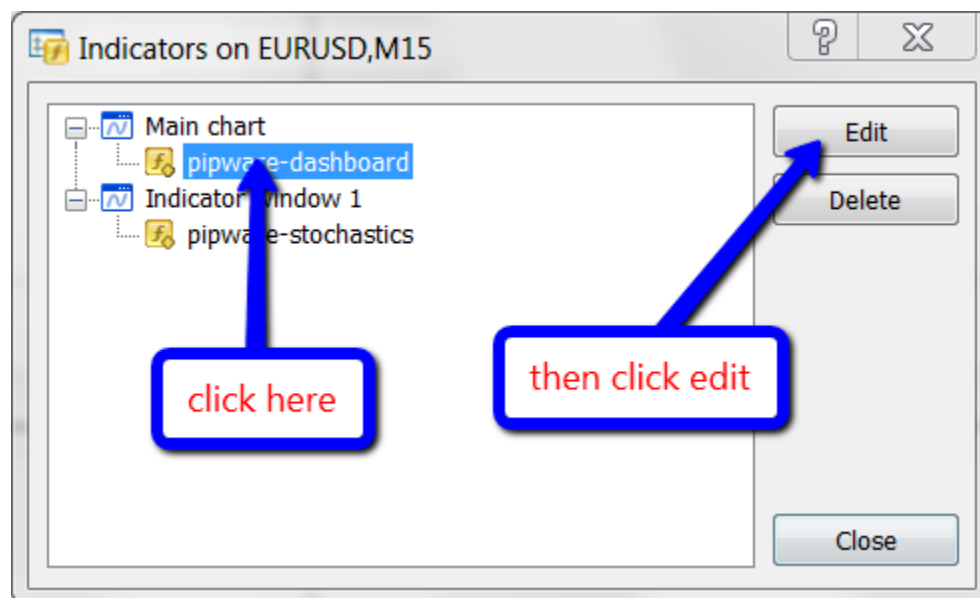


FIGURE 6 INDICATORS LIST

The custom indicator dialog will open. Click the Inputs tab

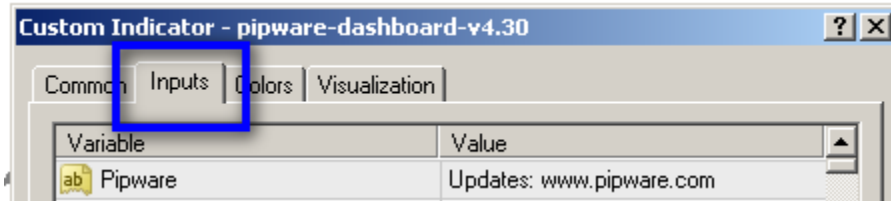


FIGURE 7 INDICATOR INPUTS TAB

Adjust the time zone setting as shown highlighted below

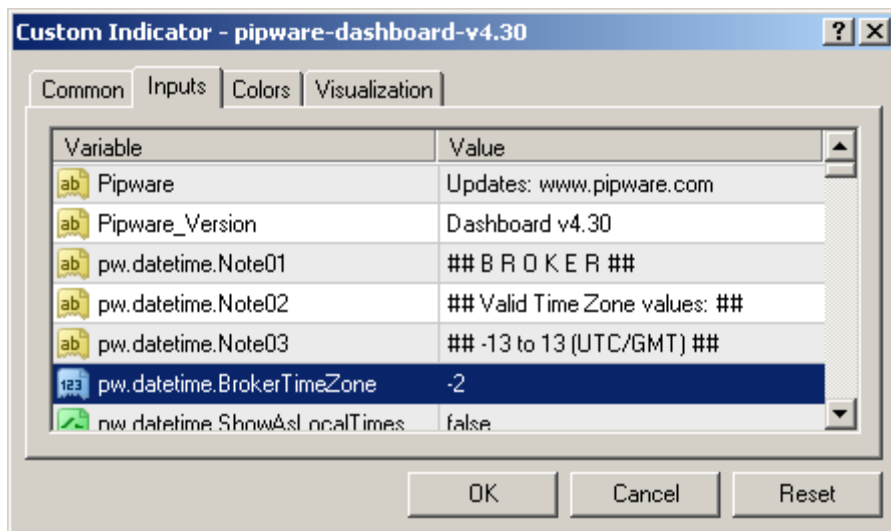


FIGURE 8 TIME ZONE SETTING

Once you have made this adjustment, you should save the template for future use ie you will not want to change the time zone setting every time you apply a template!

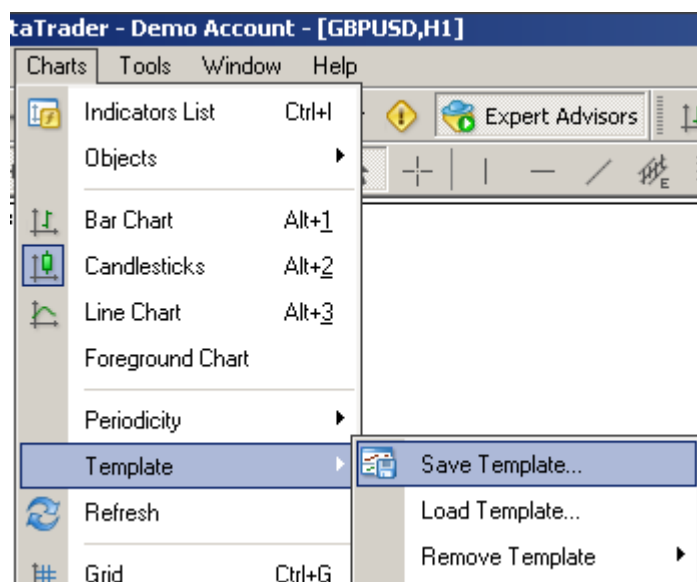


FIGURE 9 SAVING A TEMPLATE

Overview

Our goal is to help you become a proficient trader. We run a support forum at pipware.com and a trading forum at forexfactory.com. This software suite has no ongoing subscription fees and all future updates are free. We made these indicators very generic to allow huge customization possibilities. The installation zip file contains a few templates for some profitable strategies that we personally use.

Stratman uses techniques primarily based on free information found around the internet. Examples are:

3 Ducks (www.forexfactory.com/showthread.php?t=56140)

Retro-trader (www.dacharts.com/retrotrader.php)

40-100 pips (blog.51.ca/u-61525/2007/04/03/40-100-pips-perday-trading-system)

Version 7.00 changes

The main changes in this update are related to usability. The name has been changed to the pipware-suite rather than the pipware-dashboard (the dashboard is part of the suite). All indicators now use generic names (no version in the name) so that templates are not affected by indicator updates. A second moving average and a linear heiken ashi mode have been added to the pipware charts. The dashboard and news master indicator now have a dpi setting to solve a problem caused by computers being sold without the non-standard 96 dpi setting. The chime and heiken ashi indicators have been added to the suite. The news master also has an hour adjustment to solve a rare problem found in windows time zones.

Note: This is a quick start guide ie a portion of the pipware suite manual. The full manual can be downloaded from <http://www.pipware.com/software/dashboard.html>