



## November 2003

### Data Feed:

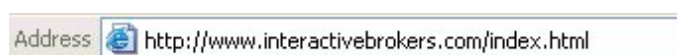
#### Interactive Brokers

by Howard Arrington

[Interactive Brokers](http://www.interactivebrokers.com) (IB) provides direct access to Stocks, Options, Futures, and Electronic Traded Funds around the world. IB is a deep discount broker with an electronic order execution platform. IB offers on their web site a Demo version of their platform that everyone is welcome to use. This is *fantastic* because now anyone can have a delayed data feed for **FREE** to use with Ensign Windows. You do not have to open an IB account. You may want to have an IB account, however, to get the free real-time data feed. The Demo provides a 15-minute delayed data feed for these symbols.

NYSE		NASDAQ		Futures	IBIS	LSE	
AIG	JNJ	ADBE	JDSU	ES	ADS	AAL	HSBA
AOL	JPM	ALTR	JNPR	NQ	ALV	AHM	ICI
BA	LTD	AMZN	KLAC	GE	BAS	ANL	III
BMJ	LU	AAPL	MXIM	J7	BAY	AZN	IPR
C	MCD	AMAT	MEDI	E7	HVM	BA.	JMAT
CAT	MDT	BEAS	MERQ	YM	BMW	BAA	LLOY
CI	MER	BBBY	MSFT	YJ	CBK	BARC	MKS
CSC	MMM	BRCM	NTAP	ZB	DCX	BATS	MRW
DAL	MO	BRCM	NXTL	ZF	DGX	BAY	NRK
DD	MRK	CEPH	NVLS	ZN	DBK	BB	OML
DIS	NSM	CHKP	NVDA	ZT	DPW	BHP	POC
DOW	NT	CIEN	ORCL		DTE	BLND	PRU
EK	PG	CSCO	PSFT		EOA	BOOT	REL
EMC	ROK	CTXS	PMCS	<b>Options</b>	EPC	BP.	RR.
F	RTN	CEFT	PDLI	OEX	FME	BSY	RTR
FDX	S	CNXT	QCOM	MSFT	HEN3	CBRY	SCTN
G	SLE	COST	SANM	DELL	IFX	CPI	SDR
GE	SO	DELL	SEBL	IBM	LIN	CS.	SFW
GM	T	EBAY	SBUX	CSCO	LHA	CW.	SHEL
HD	TXN	DISH	SPOT		MAN	DGE	SN
HET	TYC	FLEX	SUNW		MEO	EMG	STAN
HNZ	USB	GILD	TLAB	<b>DTB</b>	MLP	EMI	SXC
HON	VZ	ITWO	VRTS	DAX	MUV2	GLH	TSCO
HWP	WMB	IDPH	WCOM	EU3	RWE	GSK	ULVR
IBM	WMT	NTC	YHOO	ESTX50	SAP	HG.	VOD
					SCH	HNS	
					SIE		
					TKA		
					TUI		

This article provides instructions for using your web browser to access the free delayed data feed from IB. Use the Internet Explorer web browser to navigate to <http://www.interactivebrokers.com/>. Click the Systems | Demo menu as shown in this image.





The following image is displayed in your web browser. Click the big Login button in your browser.

## Trader Workstation Demo

The Interactive Brokers TWS demo mirrors the actual TWS in both form and function but utilizes 15 minute delayed quote data instead of real-time, and limits the number of **displayed symbols**, and does not execute and clear actual orders. The IB TWS demo is available from 12:30am - 11:59pm, seven days a week. If you experience technical difficulties with the demo system please email [tac@interactivebrokers.com](mailto:tac@interactivebrokers.com).



The next screen that displays in your browser shows the following Login form with a pre-assigned User Name and Password. Click the Login button.

## Login to TWS 811

**This is a demo version. Please click Login button below to proceed**

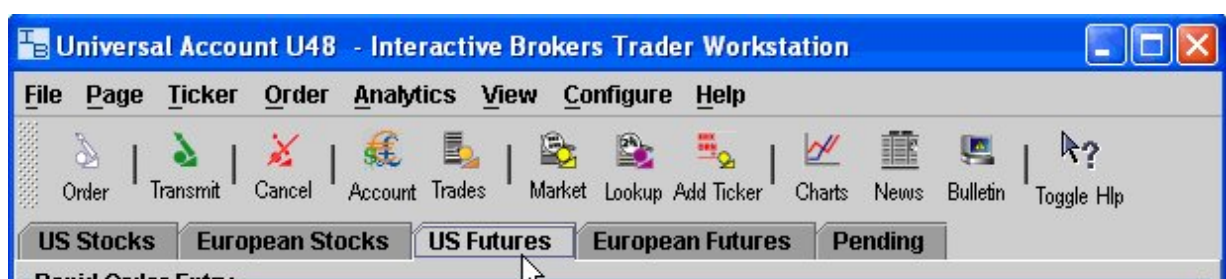
When the login screen appears, re-enter your password for your protection.  
**If the Login screen does not appear, click on the puzzle-piece icon below to download the Java Plug-In.**

User Name	<input type="text" value="edemo"/>	
Password	<input type="password" value="*****"/>	
Settings Dir	<input type="text" value="c:\IBJts"/>	<input type="button" value="Browse..."/>
<input type="button" value="Login"/>		<input checked="" type="checkbox"/> Use SSL

## Notice

**Important:** Closing this window will close the Java Trader Workstation

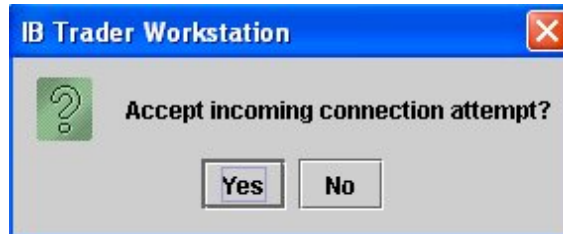
The Trader Workstation (TWS) form will display with example quote pages already filled in.



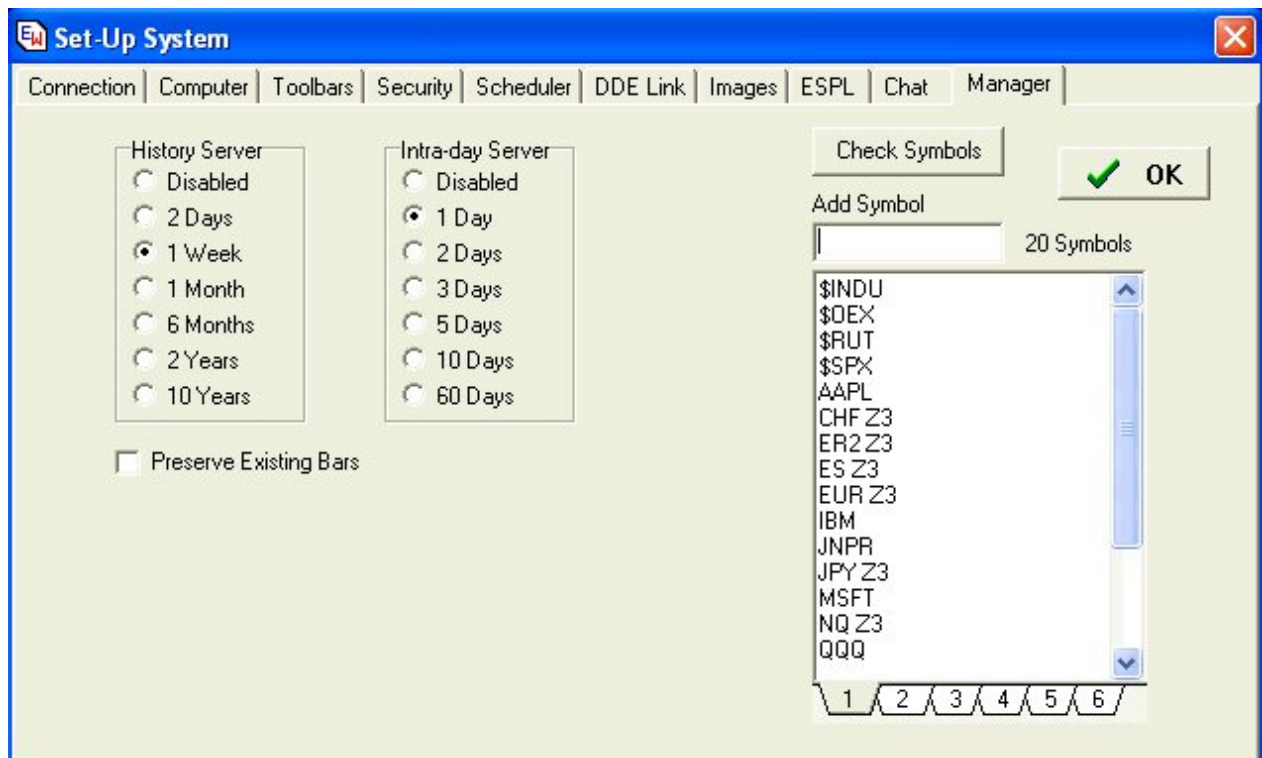




Ensign will show a message 'Go accept connection in TWS'. Bring the TWS into view using the Start task bar and click on the Yes button to accept the connection. Ensign Windows will then make a direct socket connection with TWS and receive the IB data feed.



In Ensign Windows, click menu SetUp | Manager and enter symbols to follow on the manager list. This image shows several commonly followed symbols.



The symbols that are on the Ensign manager list will receive data independently of whether or not they are being followed on a TWS quote page. The data will populate quote pages, charts, and time and sales forms in Ensign Windows, and update them tick by tick. The data feed sends the Last, Daily High, Daily Low, Daily Volume, Tick Volume, Bid, Bid Size, Ask, Ask Size and Yesterday's Close.

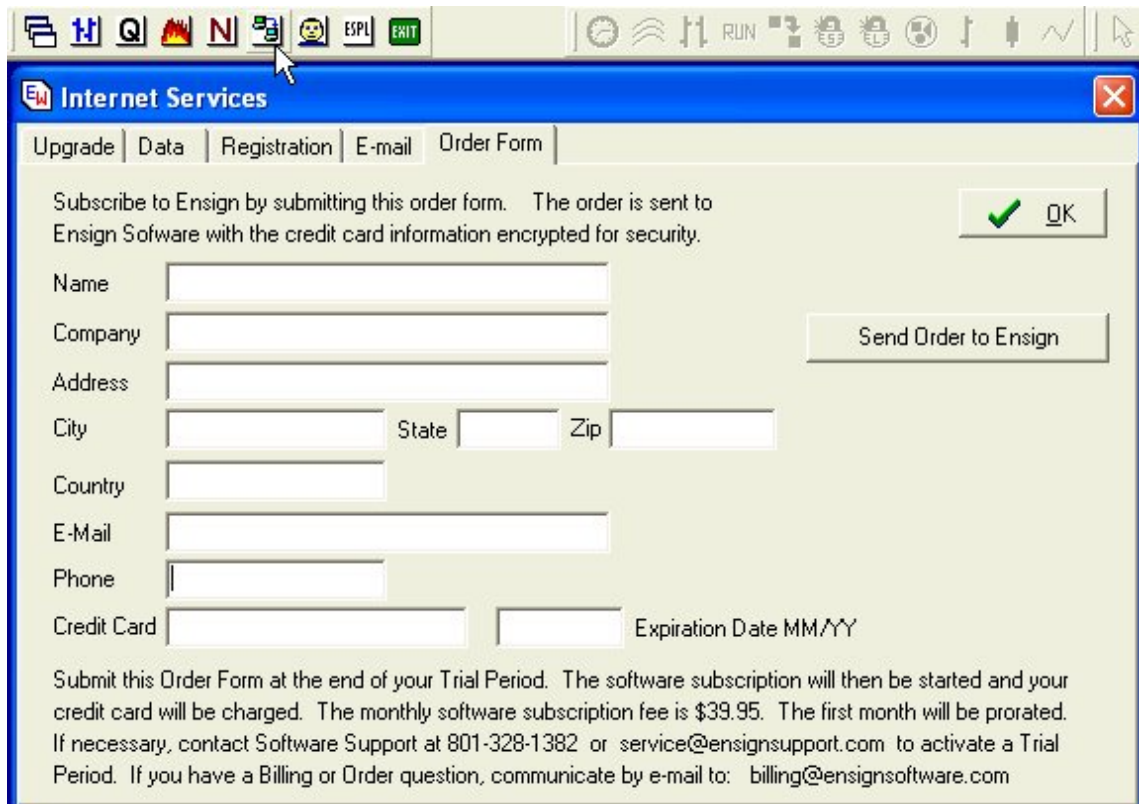
A comparison of the free Demo feed with IB's real-time feed reveals that the Demo feed is a small sampling of the actual feed. The symbol ES Z3, for example, updated 16 times in a 90-minute period on the free Demo feed, whereas the real-time feed updates dozens of times per minute.

IB does not have US pit traded futures. The scope for US futures is limited to those that trade electronically, such as ES Z5, NQ Z5, and YM Z5. IB does not provide TICKI, TIKI or PREM index symbols. IB does have TICK and TRIN symbols by exchange, example: \$TICK-NYSE and \$TRIN-NYSE.

IB does not have a historical database. Ensign Windows overcomes this limitation by purchasing data from DTN Market Access for tick, intra-day, daily, weekly and monthly data to refresh the Ensign charts. Ensign has the above refresh data for US and Canadian stocks, futures and indices, LIFFE, IPE, EuroNext, Eurex, and daily

refresh data for all foreign stock exchanges. The refresh is integrated in the same manner for the IB users as it is in Ensign versions for competing vendor data feeds.

Everyone is invited to [download Ensign Windows](#) for use with the Interactive Brokers feed. There is a 1 week free trial period for Ensign Windows. If you want to continue to use the program, click the Internet Services button and fill in the Order form to provide a credit card for Ensign to bill the monthly use fee of \$39.95. You can cancel at any time and your subscription will not be renewed the following month.



The screenshot shows a Windows-style application window titled "Internet Services". It has a menu bar with "Upgrade", "Data", "Registration", "E-mail", and "Order Form". The "Order Form" tab is selected. The form contains the following fields: Name, Company, Address, City, State, Zip, Country, E-Mail, Phone, Credit Card, and Expiration Date MM/YY. A "Send Order to Ensign" button is located to the right of the form. Above the form, there is a message: "Subscribe to Ensign by submitting this order form. The order is sent to Ensign Software with the credit card information encrypted for security." and a green checkmark icon with an "OK" button. At the bottom of the form, there is a paragraph of text: "Submit this Order Form at the end of your Trial Period. The software subscription will then be started and your credit card will be charged. The monthly software subscription fee is \$39.95. The first month will be prorated. If necessary, contact Software Support at 801-328-1382 or service@ensignsupport.com to activate a Trial Period. If you have a Billing or Order question, communicate by e-mail to: billing@ensignsoftware.com".

In addition to IB's discounted commissions, what makes IB attractive is the amount of real-time data that is available for free when you have an account with Interactive Brokers. Consider the following two examples:

- US Securities & Commodities Bundle (Includes all Stock, Options and Futures exchanges)
- US Commodities (Includes Globex, ACE, NQLX, and OneChicago)

Real-time data from these exchanges is **Free**. However, a \$10.00 Market data fee will be charged when your account has less than \$30.00 in commissions per month. Even if the commission threshold is not reached in a month and the \$10 Market data fee is charged, the \$10 fee is still considerably less than paying exchange fees to have a real-time data feed.

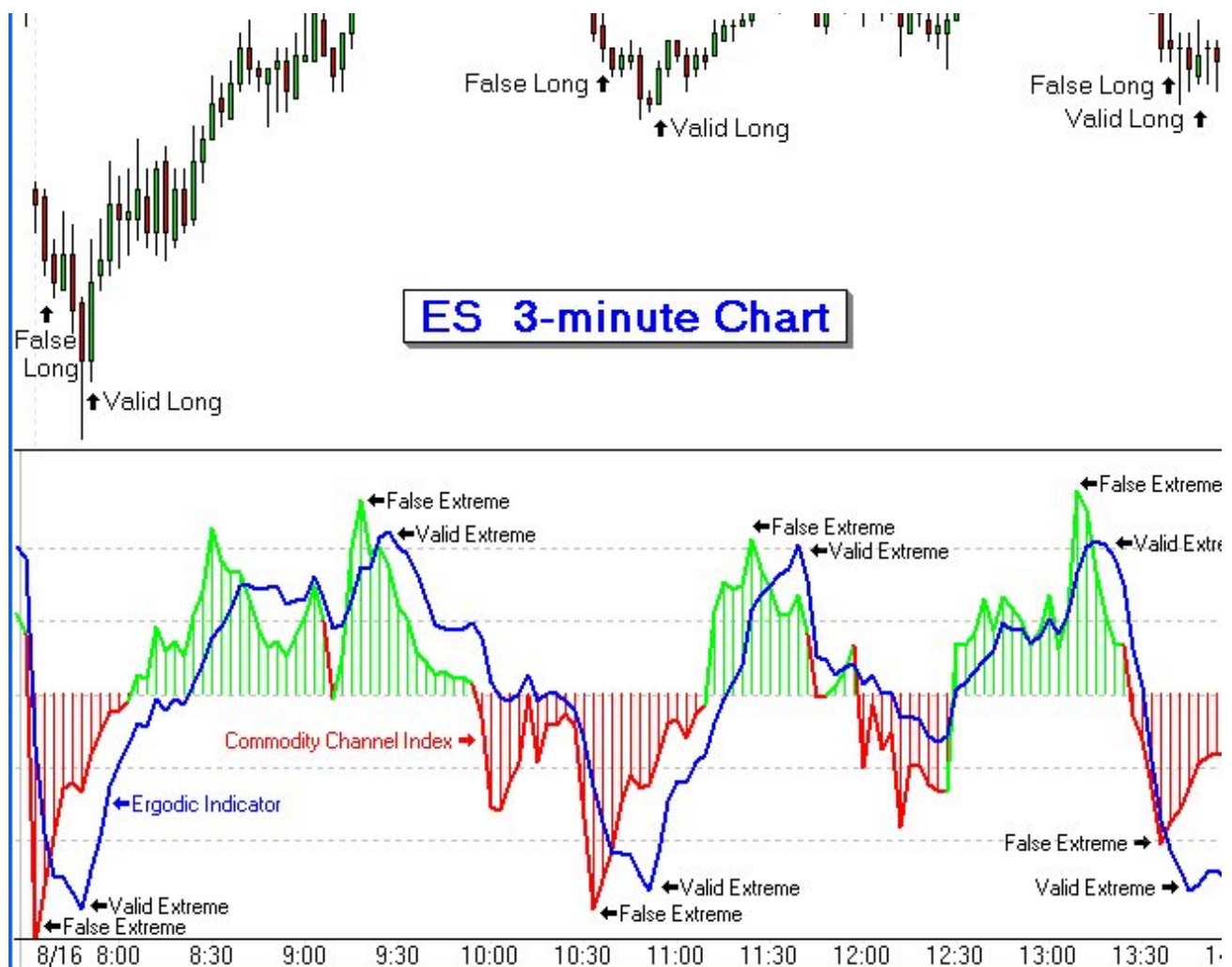
---

### Trading Tip:

#### Qualify CCI with Ergodic

One way to use the Ergodic indicator is as a qualifier for the CCI indicator. The blue line is the Ergodic study superimposed on the Commodity Channel Index study. Ergodic confirms the CCI extreme trades very well. We used to get a 50/50% win/loss ratio on these trades. The last few days it is running more like 80% winners. This method is only used for reversals when the CCI is in the extreme range. Thought you'd like to see what some are doing with Ensign Windows.





Editor's Note: The study parameters were not provided with the example chart. Therefore, I used Playback for ES020816 to recreate the 3-minute chart. I adjusted the CCI and Ergodic study parameters until I was able to recreate the example chart with enough similarities to be close. Here are the parameters I think were used in the example.

### Commodity Channel Index Properties Window

**Parameters**  
 Bars: 14  
 Average: 1  
 Multiplier: 70  
 Threshold: 100  
 Shift -L/R+: 0  
 Location: Sub Window 1  
 Data Point:  $(H+L+C) / 3$   
 Spread Alignment: Center

**Study Lines**  

Show	Zones	Color	Style	Marker	Color
<input checked="" type="checkbox"/>	0	Green	Solid	None	Green
<input checked="" type="checkbox"/>	0	Blue	Solid	None	Blue
<input checked="" type="checkbox"/>	0	Red	Solid	None	Red
<input type="checkbox"/>	500	Blue	Solid	None	Blue
<input type="checkbox"/>	-500	Red	Solid	None	Red
<input type="checkbox"/>	0	Purple	Solid	None	Purple
<input type="checkbox"/>	0	Magenta	Solid	None	Magenta
<input type="checkbox"/>	0	Red	Solid	None	Red

**Grid Lines**  
 95%  
 90%  
 85%  
☒ 80%  
 75%  
 70%  
☒ 65%  
☒ 60%  
☒ 55%  
☒ 50%  
☒ 45%  
☒ 40%  
☒ 35%  
☒ 30%  
☒ 25%  
☒ 20%  
☒ 15%  
☒ 10%  
☒ 5%

☒ OK  
☒ Cancel  
 Delete  
 Delete All  
☐ Use as Default  
☐ Show Values  
☐ Regular Diverge  
☐ Hidden Diverge  
☐ Trend Lines  
**Study Mode**  
☐ Standard  
☐ Rising...Falling  
☐ Above...Below  
☒ Zones

Default 1 2 3 4 5 6 7 8 9 10 11 12 13 14 / Copy Tab

### Ergodic Indicator Properties Window

**Parameters**

Ave 1: 35

Ave 2: 35

Average: 2

Shift -L/R+: 0

Location: Sub Window 1

Data Point: Net

Spread Alignment: Center

**Study Lines**

Show	Color	Style	Marker	Color
<input type="checkbox"/> <b>ERG Line</b>	Red	—		Black
<input checked="" type="checkbox"/> <b>Average</b>	Blue	—		Black
<input type="checkbox"/> <b>Spread</b>	Magenta		Bar	Black

**Grid Lines**

-----

- ☐ 95%
- ☐ 90%
- ☐ 85%
- ☒ 80%
- ☐ 75%
- ☐ 70%
- ☐ 65%
- ☐ 60%
- ☐ 55%
- ☒ 50%
- ☐ 45%
- ☐ 40%
- ☐ 35%
- ☐ 30%
- ☐ 25%
- ☒ 20%
- ☐ 15%
- ☐ 10%
- ☐ 5%

☐ Use as Default

☐ Show Values

☐ Simple

**Study Mode**

☒ Standard

☐ Rising...Falling

☐ Above...Below

☐ Zones

**Formula**

☐ Simple

☐ Exponential

☒ Weighted

☐ Smoothed

Default 1 2 3 4 5 6 7 8 9 10 11 12 13 14 / Copy Tab