

XARD777

H4 INSIDE BAR

GBPJPY BACKTESTING

I use "!!!-MT4 X-XARDg-INSIDE BAR stops.mq4"
release date: 6/23/20

You can download the new version at
<https://forex-station.com/viewtopic.php?p=1295413273#p1295413273>

Best time frame is Daily.
I modified it so it will work on H1, H4, and Daily.
Before, we can only use on H1 and H4.

I use Stochastic (14,3,3) cross to exit a trade.
For **LONG**, I enter above the preceding bar high.
For **SHORT**, I enter below the preceding bar low.

April 30th, 2020, 186 pips max; a **WIN**
May 5th, 2020, 54 pips max; a **WIN**
May 7th, 2020; a **LOSS**; -10 pips max
May 8th, 2020; 69 pips max; a **WIN**
May 12th, 2020; 106 pips max; a **WIN**
May 14th, 2020; 40 pips max; a **WIN**
May 19th, 2020; 107 pips max; a **WIN**
May 20th, 2020; 8 pips max; a **WIN**
May 22nd, 2020; 54 pips max; a **WIN**
May 25th, 2020; 139 pips max; a **WIN**
May 27th, 2020; 37 pips max; a **WIN**
May 29th, 2020; 170 pips max; a **WIN**

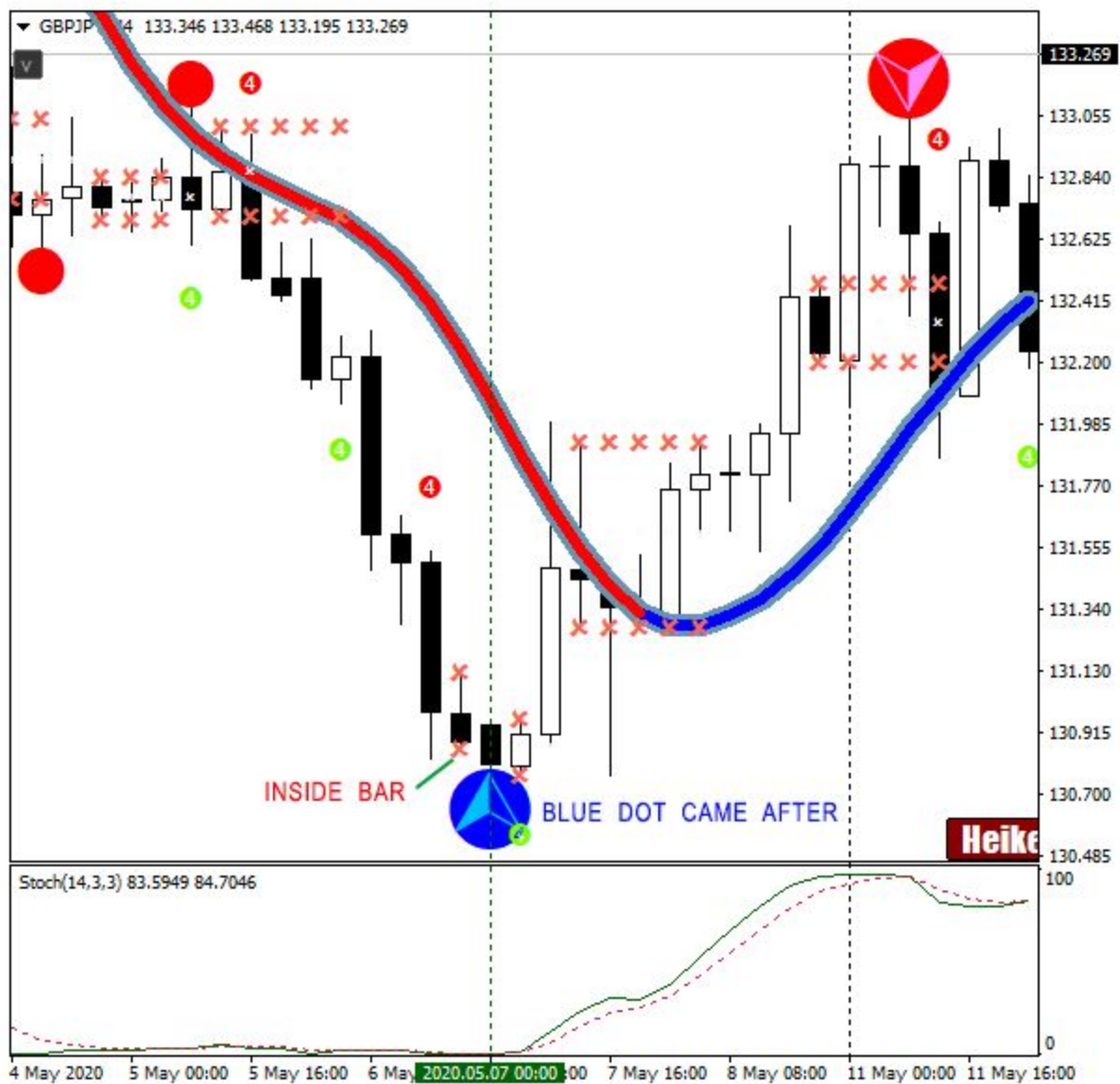
Total: **970** winning pips for May 2020, GBPJPY
-10 losing pips



April 30th, 2020, 186 pips max; a **WIN**



May 5th, 2020, 54 pips max; a **WIN**



May 7th, 2020; a **LOSS**; -10 pips max; the big blue dot came after the trade
I should exit when the Stoch crosses up



May 8th, 2020; 69 pips max; a **WIN**
 Since there is a big blue dot, I should go LONG only



May 12th, 2020; 106 pips max; a **WIN**;
after a big red circle appears, I should short only.



May 14th, 2020; 40 pips max; a **WIN**;
there's a big blue circle; I should exit early before the Stoch crosses up.



May 19th, 2020; 107 pips max; a **WIN**;
 There's a big blue circle so I should go LONG only



May 20th, 2020; 8 pips max; a **WIN** here but we may lose the trade
It's a consolidation period

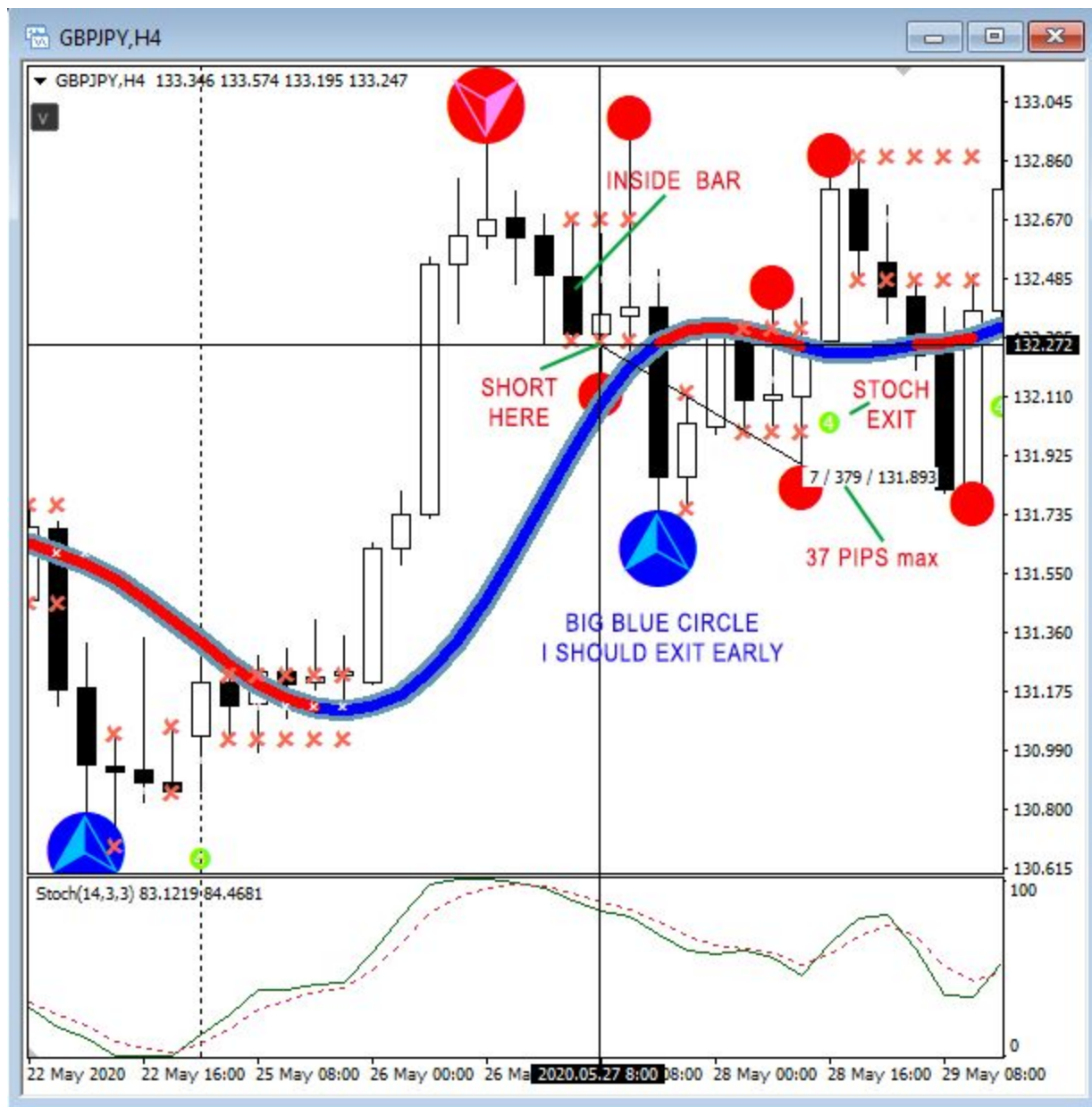


May 22nd, 2020; 54 pips max; a **WIN**

There's a big blue circle so I should exit early before the Stoch crosses up



May 25th, 2020; 139 pips max; a **WIN**
 There's a big blue circle so I should go LONG only



May 27th, 2020; 37 pips max; a **WIN**
There's a big blue circle. I should exit early before the Stoch crosses up



May 29th, 2020; 170 pips max; a **WIN**;
There's a big blue circle so I should go LONG only